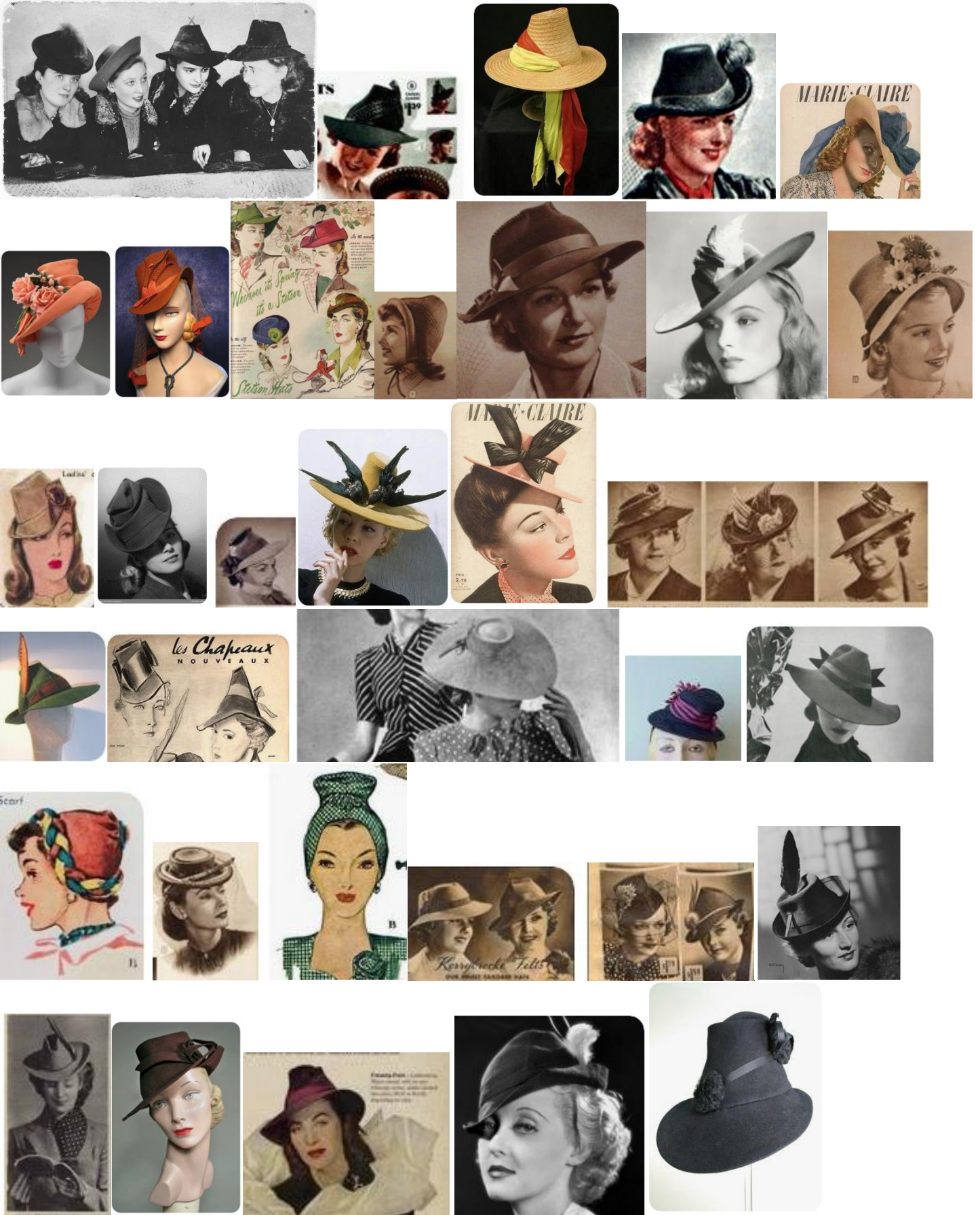


Some shapes I find interesting in 40s felt or feltable hats:

Tapering crowns – so many, with or without brims. Sometimes they go out again at the top, too.





Incredible silk veined felt hat in white with dramatic wide bow at front and light purple band. Purple netting surrounds the face. Finished with chamilla polka dot. Feather and brimwidth: 21 1/2" around. From the SPENCER COMMUNITY THEATRE.

S106  
SOLD



1930s blue velveteen for shaped hat with loop on left side trimmed with white fur pom-pom. Size 22, no flaws.

S65



Fantastic 1940s western inspired tilt hat of soft mustard brown velvet with straps that wrap to back to secure under hair. One size, no flaws...wonderful!

S210



Late 30s noir girl sculpted black felted wool hat. Soft peak with angled front brim, narrowing as it wraps left side of head, dipping low on right side. Wrapped in black grosgrain ribbon band with bow in back. Meant to perch, one size, may require pins to secure to hair. Very Ginger Rogers! No flaws.

S115  
SOLD



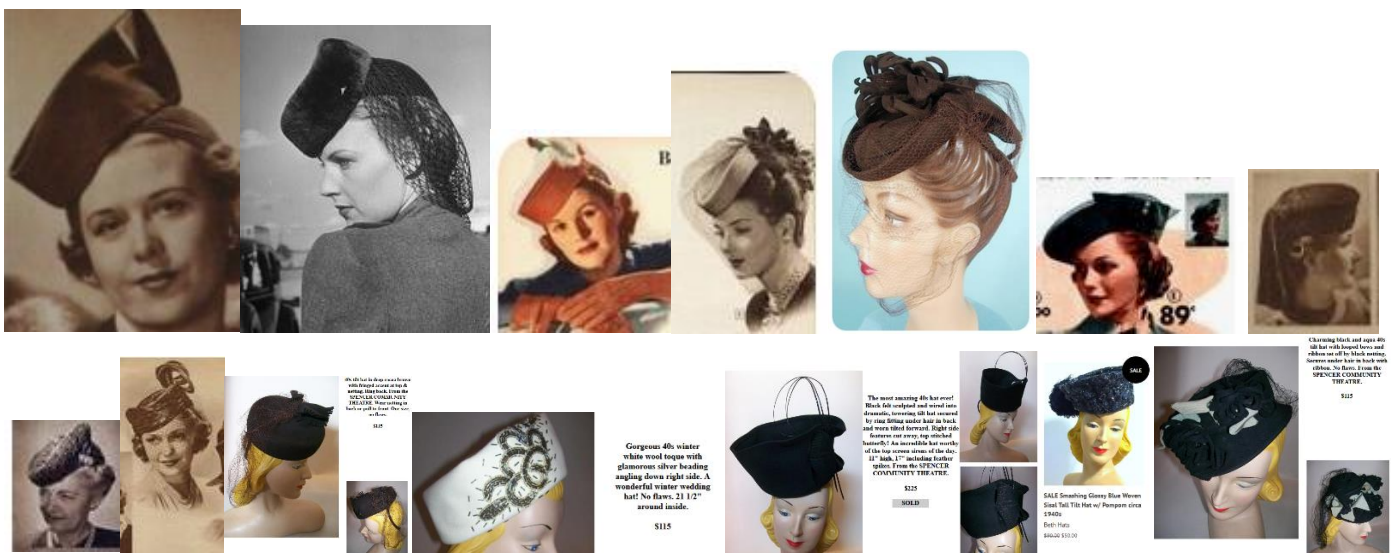
Late 30's turban inspired, sculpted black felted wool hat with veiling band and aurora borealis rhinestone accent. 21 1/2" around inside, no label, no flaws. A grand hat for a dramatic look!

S75



Pouring pompadours – especially with a snood!

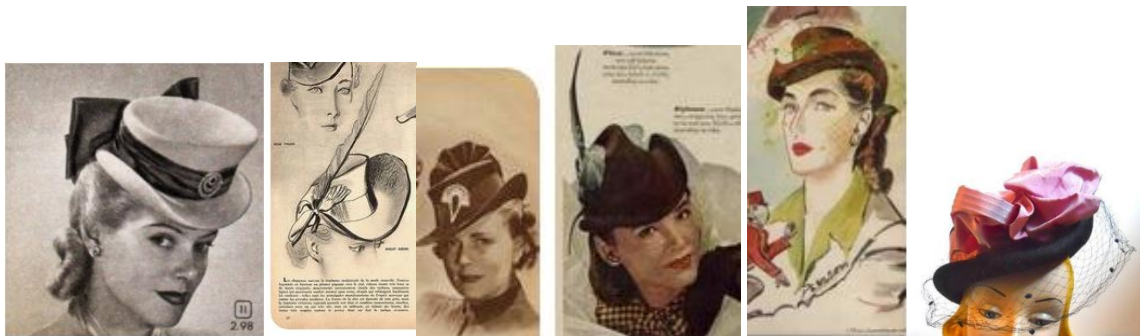




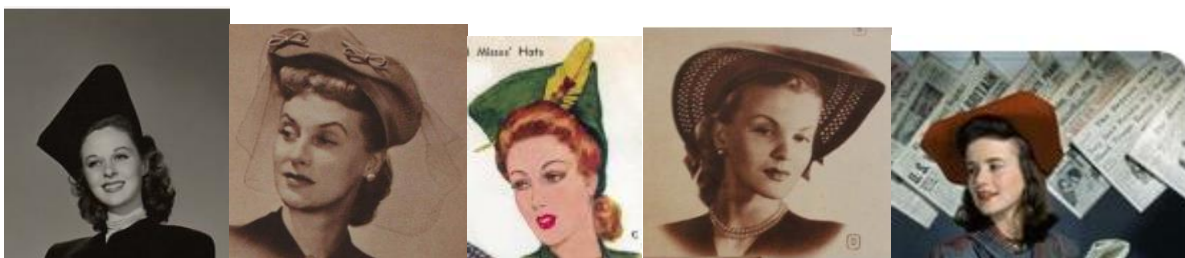
### More bumper than bumper!



Suiters. You can't go wrong. Not many pictures, probably because it wasn't exactly new, but they were a thing and they had a name. and I want to use my brim block...



### Tall and square/shaped halos





Unusual 40s. Aline one hat. Felt over black. Color of material allows through for the under fabric and is back to green. From hat to painted (orange). One size. \$18



1940s. Sky blue felt over hat with wide, angled full brim, cuffed back with 2 buckles to tighten. By "Dorothy" - size 1, Q2. No flaws. \$130



40s brown felt stand up sunburst pleated tilt hat...straps in back with elastic ring stretch to hold under hair. One size, no flaws. \$145  
**SOLD**



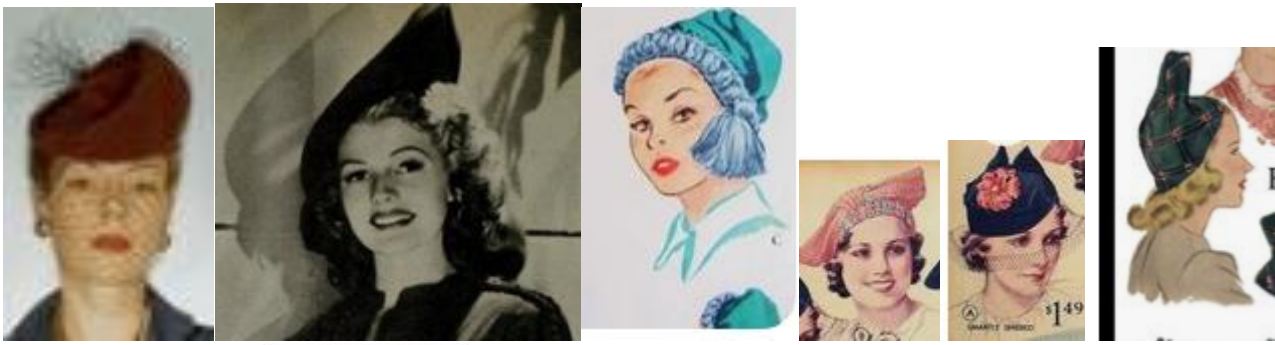
40s felted cocoa wool hat with faux fur trim. Juliette style cap has stand up front edged in a lighter brown faux fur. No flaws, size 21 1/2. \$135



Points, up or folded. Mostly because they're using fabric, but still, the closest thing I can find to what our first hats are going to be.



1940s white satin and silver tulle with under meshing shaped "spine" at peaked front. Lined in buckram for firm, no fold, no flex. Size 22. \$120



1940s sculpted blue felt "crown" hat with veiling. Veil pulls up and ties in back. Body of hat is fitted to head. No flaws, size 22. From "Phyllis Mae".  
\$115  
RESERVED



Felted Confetti Fleck Hat with Pom Pom circa 1930s  
no label  
\$57.00

Curry Felted Wool Veiled Hat with Bells on Top circa 1940s  
no label  
\$70.00



I saw 30's over-sized chinch bag and grabbed hat to describe needs. Large rounded with side bag with deep brown green gingham ribbon band and vertical loop. Padded hat band to suit veil with top attached here. design. A few spots on hat, no label and no firm tag tag. Hat measure 21 1/2" around.  
\$25

1930s red leather pointed picnic hat with green leather on side. Short front brim. No label, no flaws, size 21.5  
\$110



1940s silk hat of raffinated and veiled green cotton tulle, veiled and tipped forward around front face. No label and no flaws. Reverse veiling, has a firm fabric hat having to return to work as it is replaced with line of hair to do it. Loop of fabric goes back to secure inside hat. One size. A superb and janny hat!  
\$157  
SOLD

Donkey wings:



1940s black woven silk Juliette cap with winged effect around sides, bow in front. No flaws, one size.  
\$110

1930s mounted furrow felted wool hat with half slipped details on top, brown veil. Size 22. A few tiny holes in veil, no stains or holes on the hat.  
\$100



Late 40s blue felted cocktail hat with rolled brim and 2 bent tabs over each side of face adorned with beads. Veil over face, no flaws. Sz 22.  
\$55

Frontier black felted straw-grip shaped silk hat from the 1940s with arched glossy black feather plumes on either side. Set forward on head with elastic to go under hair by Maynor Hats. no flaws, one size.  
\$185

40s structured blue double peaked headband hat with bows and veiling. The veiling needs replaced (having for visual cue in case wearer decides to add new). Would look superb without as well. No other flaws.  
\$50



1940s round tan felted wool hat with rolled under short brim. Each side adorned with whole bird wing accents on felted flaps. An authorized Le Monnier reproduction. Size 22. No flaws, theatre label this was used in is glued inside at top of crown.  
\$165

1930s rose pink wool embroidered Juliette cap with double bows at side. Size 22. Some moth damage, no stains, a lovely little piece!  
\$70

Not 40s or don't fit into a category – bonnets, turbans, flat Spanish hats, Juliette caps:



1940s coronal felt wool overwide slouchy bow with top stitch detailing, beaded fringe detail at side. Size 22, no label, no flaws.

S115



Bold ornate felted 40s tilt hat with small trim, large bright pink velvet pompadour. Back cord to secure beneath hair in back. Some exposed purple thread, may have had a third flower on bobble or chain, fantastic condition. One size.

S140



Pink silk 20s cloche with gilded details. Slubbed silk cloche has golden metallic embroidered band around crown and layer peeking from beneath around face, gathered into fan shape at one side. Small metal painted accent above fan. Lined in silk twill embroidered with name "Lady Supreme", original store string tag intact, appears never worn. 21 1/2" around.

S210



SOLD



Gorgeous cherry red wide brim sisal 40s hat with shallow crown, large gardenias across the front. Red velvet band and bow, red velvet clips inside secure to head. One size. No flaws.

S165



Unusual 40s blue silk hat with draped back and ruffled edge around top, accented with swirled blue feather. Some faint discoloration to top, slightly imperfect but so dramatic! One size.

S135



Early 1920s mutton shaped pink sisal and mutton hat with wooden buttons, silk lining, side bow. Very small in size, measures just under 20" around inside. Flawless, in and out.

S165



1940s brown petal cut felt hat with green ribbon lining. Covers top of head and part of back, unstructured so will need pinned to 'do. No flaws.

S60



1930s deep brown corduroy hat with plumed tilted wood detail on top with wired grosgrain ribbon. A few mesh frays, heavily visible. Will need pinned in or a strap added to go beneath hair and secure.

S120



1940s black velvet tilted platter hat with large blue marabou feathers. Velvet bow to left side hangs past wide brim. Feathers are worn and could use replaced, selling as is for placement. Size 22. By Sunnyland.

S185



40s small platter hat in deep blue with sisal scalloped trim and underside, trimmed with velvet and beads. Clips on, may need hair pins to secure. No flaws.

S110



Apricot Ombre Swirled Sisal Hat circa 1930s no label \$65.00



Deep blue sculpted feather side tilt 40s hat. Sits lower on right side then left, sculpted into feather shapes curving around and framing the face. By French milliner "Marie Louise". Size 22, no flaws.

S165



30s velvet hat with whimsical sculptured stand up double spiral. Black silk velvet cap is top stitched in a deco look, swirled concentric double circles of silk satin over a stiff backing create dramatic headpiece. By New York Creations, size 22. Original veiling damaged and was removed, no flaws to hat as seen without. Topper measures 9" across & 6" high, hat 20" around (requires pin to secure).

S175



1940s black felted hat with clip sides, arched black cog feathers and a silk rose in end. No label, no flaws. Rose not original to hat, added to help some flaws on the base of the feather accent (vintage flower). One size.

S125



1940s small round tilt hat with topknot on top, velvet all around with charitable dots at sides. Felted wire ring to secure at back of head topped w/ 2 bows. No flaws, one size.

S145



1940s soft tilted wood platter hat with fringed edging and large felt disc tipped hat pins. Asymmetrical shape, wide on right side. No label, no flaws.

S120



1920s mesh gold metal cloche hat with black velvet trim. Has some tarnish to metal above left brow. Size 21.5.

S160



30s asymmetrical felted brown cap with mink trim on either side, folded front with gold pin. Size 22. No flaws.

S155



1930s purple silk velvet turban with bow top. Size 21 1/2 best fit, no flaws.

S125

SOLD



1930s gold with ornate crown velvet hat. Crowned feathers above a black velvet oval mesh crown with a black mesh band.

S130

SOLD





**Boater Style Black Straw Tilt Hat**  
circa 1940s  
none  
\$35.00



**Peaked Swirled Feather Tall Crown**  
Hat circa 1940s  
none  
\$45.00



**Pewter Grey Sisal Cloche Hat with**  
**Deco Trimming** circa 1930s  
none  
\$70.00



**Autum Hues Feather High Crown**  
Tilt Hat circa 1940s  
none  
\$55.00



**Shocking Pink Feather Topped Blue**  
**Felted Wool Hat** circa 1940s  
none  
\$110.00



**Sweet Straw Tilt Hat w/ Black**  
**Velvet Trim** circa 1940s  
none  
\$60.00



**Turban Style Black Felted Fur Hat**  
**w/ Feather Plume** circa 1940s  
none  
\$155.00



**Sheer Horsehair Mesh Braid Cloche**  
**w/ Silk Velvet Discs** circa 1920s  
no label  
\$110.00



**Glamorous Blue Beaded Wide Brim**  
**Hat w/ Sisal Loops** circa 1940s  
no label  
\$50.00



**Blush Rose Black Hat w/ Dramatic Veil circa 1940s**  
no label  
\$80.00



**Tall Crown Black Velvet Bowler Style Tilt Hat w/ Feathers circa 1940s**  
no label  
\$80.00



**Night Sky Blue Sisal Hat w/ Silk Band, Sequins and Feathers circa 1940s**  
no label  
\$60.00



**Unusual Tan Suede Lace-Up Beret Inspired Hat circa 1940s**  
Howland-Swanson  
\$80.00



**SALE Smashing Glossy Blue Woven Sisal Tall Tilt Hat w/ Pompom circa 1940s**  
Beth Hats  
\$90.00 \$50.00



**Sapphire Blue Felted Wool Hat w/ 3-D Flowers and Faux Pearls circa 1940s**  
Schuneman's  
\$50.00



**Vivid Blue Deco Seamed Satin Hat w/ Velvet Ribbon circa 1940s**  
no label  
\$60.00



**Cinnamon Feather Topped Autumn Tilt Hat circa 1940s**  
no label  
\$80.00



**Fawn, Cocoa and Gold Chenille Cap Hat circa 1930s**  
no label  
\$40.00



**Starry Night Black Angled Wool Evening Hat w/ Veil and Stars circa 1930s**  
Gage Brothers  
\$47.00



**Deep Cocoa Velvet Hat with Black Feather Trim circa 1940s**  
Carol  
\$45.00



**Ink Black Sisal Fitted Cap with Feather and Sequin Accent circa 1930s**  
no label  
\$75.00





**Natural Sisal Open Crown Hat with Flowers circa 1940s**  
no label  
\$47.00



**Felted Wool Grey Hat with Vivid Wine Colored Feathers circa 1940s**  
no label  
\$45.00



**Coppery Pink Silk Cloche Hat with Floral Accent circa 1920s**  
no label  
\$60.00



**Palest Rose Pink Raffia Weave Beret Hat with Stem circa 1930s**  
New York Creations  
\$55.00



**Curry Felted Wool Veiled Hat with Bells on Top circa 1940s**  
no label  
\$70.00



**Apricot Ombre Swirled Sisal Hat circa 1930s**  
no label  
\$65.00



**Golden Woven Metallic Cord Cap Hat circa 1930s**  
no label  
\$55.00



**Felted Confetti Fleck Hat with Pom Pom circa 1930s**  
no label  
\$57.00



**Chocolate Brown Floral Design Cutwork Cap Hat circa 1930s**  
no label  
\$42.00



**Delft Blue Rounded Crown Tilt Hat w/ Ribbon Trim circa 1940s**  
no label  
\$55.00



**Rounded Top Tall Black Hat with Silk Bow and Faux Pearls circa 1940s**  
no label  
\$75.00



**Glossy Red Woven Straw Hat with Green and Red Silk Ribbon Hat circa 1930s**  
no label  
\$45.00



**Mustard Sculpted Felted Wool Hat w/ Deco Braid Trim circa 1930s**  
no label  
\$45.00



**Black Felted Wool Cocktail Hat with Fringed Spiraled Felt Accent circa 1930s**  
no label  
\$70.00



**Peaked Woodsy Brown Felted Wool Hat w/ Fringed Brim circa 1930s**  
Dayne  
\$48.00



**Cocoa Felted Wool Sculpted Asymmetrical Hat circa 1930s**  
no label  
\$52.00



**Crystal Spiked Ball Adorned Cocoa Felted Wool Sculpted Asymmetrical Hat circa 1930s**  
no label  
\$70.00



Sporty pine green velveteen 30s hat with deco seaming, fold up brim split in back. Small size, 21.5...no flaws.

\$110



40s hat of deep blue sisal with open crown, turned up narrow brim. Accented with chenille and silk bundle of wheat, perfect for fall! By Evelyn Varon. Size 22. No flaws.

\$95



Sweet yet dramatic black velvet topper from the 1930s. Black velvet is top stitched all around, has side "straps" of velvet to pin into place...huge bow in front! From the "Collegienne Shop". Sz 22.

\$145



Sweet shallow crown 40s straw tilt hat with black velvet trim. One size. No flaws.

\$90



Wide, fold up brim 40s round hat with black grosgrain ribbon around outside, trimmed in gelatin based sequins in shapes of moons, stars, flowers and leaves. Metal ball and bugle bead dangles. By Lilyan, a New York Creations pieces. Size 22. A few missing sequins, no holes or stains.

\$115



1940s faux fur turban in black with navy blue knit wool band twisted into a button at top front. No flaws, stretch to band allows for size 22 to 22 1/2.

\$75



1930s Juliette cap in black felted wool with harlequin sequin design and small bows all around. One size sits atop head, could be pinned in if needed. A few missing sequins, no holes. No label..

\$80



1940s sculpted magenta felted wool hat with leaf design on front. Lower on right side than left. No flaws, sz 22 1/2

\$80



Late 40s navy blue clamshell style hat by Ilten with lace edge trimmed with bows. Clip style inner crown, one size. 12" wide. No flaws.

\$55



40s natural straw wide brim, short crown hat with black velvet trim and band...bright flower trim. Velvet covered clips inside crown secure to head. One size, no flaws.

\$90



Tall sculpted black velvet 40s hat, slips over back of head (may need hairpins to hold). Black faille ribbon around inside, has one velvet ball on back (missing the other). By Sunnyland. Size 22.

\$55



1940s peaked hat with red, blue and black feathers swirled toward front. Felted base wrapped with feathers at front, covered in netting. No flaws. 22 1/2"

\$90



Fantastic late 30s/early 40s hat of black felt with off center large sculpted bow dotted with rhinestones. No flaws. By "Branca Models". 21 7/8" around inside.

\$145

SOLD





Dark brown felt tilt hat from the 1930s with bold orange to brown ombre died feather plumes. Missing band to secure under hair, could be replaced or pinned into hair. No flaws.

\$145

[Add to Cart](#)



Glamorous sheer black cello 40s wide brim hat with shallow crown, trimmed at edges with netting and tiny black velvet bows. Narrow velvet band around crown. One size. No flaws.

\$185

[Add to Cart](#)



Sweet 1940s brown velvet headband with mink heart petal flower on one side, one petal on other. No flaws.

\$65

**SOLD**



40s tangerine cello tilt hat with brown velvet dots and arrow tip tab. Elastic band to go under hair needs replaced, could be pinned in place. One size.

\$80

**SOLD**



Sweet 1940s brown velvet headband with mink heart petal flower on one side, one petal on other. No flaws.

\$65

**SOLD**



40s winter bonnet hat of knit wool accented with rhinestones, ties below chin...perfect for covering ears without disturbing your 'do! One size, no flaws.

\$50

[Add to Cart](#)



Pink warm autumn silk velvet ruffled 30s bere with matching silk. Not for outdoor or party buckle. Hat to 22, back with 20-20 1/2" waist. No flaws.

\$160

[Add to Cart](#)



Elegant 40s peaked hat embellished with luxe sheared beaver fur, back snood of silk velvet ruched and tied with grosgrain ribbon. Ideally worn with hair tucked into snood, not possible with this mannequin! N flaws, fur & hide in perfect condition, no label. One size.

\$155

**SOLD**



1940s tall crown deep green felted wool hat with multicolored pheasant feathers in front, green veil. No flaws. Size 22.

\$80

[Add to Cart](#)



30s black silk velvet hat with deco top stitching and rhinestone key accent. A few missing stones in key. No label, no holes or stains. Sz 22.

\$95

[Add to Cart](#)



1940s sisal hat in lavender with sculpted raffia flowers on right side. Wraps over head loosely, will need pinned into place. No flaws. One size.

\$115

[Add to Cart](#)



Structured Persian Lamb tall 1940s hat with faceted glass accent at front. Size 22 1/2. No flaws

\$80

[Add to Cart](#)



1940s open weave sisal hat with open crown, rippled black silk ribbon and black netting. No flaws. Size 21 1/2.

\$100



1920s black silk crochet cloche with silk lining. Cinch tie to tighten. Flawless condition, will fit 21 to 22.5. No label.

\$145



Superb pastel striped 20s cloche with button accents. Tightly woven cello bands in mauve, tan and mushroom set off rose coloured pink falls section. Tiny celluloid buttons accent pinched top. Silk lined (silk has some shattering). 21" around, exterior flawless. From the SPENCER COMMUNITY THEATRE.

\$185





Exquisite black silk mini tilt hat from the 1940s with huge velvet and crimped cotton petal peonies with yellow centers. Oversize black silk bow in back. Labeled size 22, fits forward on the head and pinned into hair...ribbon or band may be added to secure in back beneath hair. No flaws, stunning condition.

\$150

SOLD



Dramatic 40s toque in black felt, sculpted with bow at side and huge pale aqua ostrich plume wrapped around. 21 1/4" around, no flaws.

From the SPENCER COMMUNITY THEATRE.

\$135



1940s black felt wrap-over tilt hat with gorgeous fox fur tail trim. Ridges on front brim, bow in back. Size 23. Flawless!

\$155

SOLD



Greenery navy blue velvet and grosgrain cloche with bottom mesh/denier. Minor wear may be missing a second button to balance on other side. Great, well wearable condition. From Marshall Field & Company. Size 21, small.

\$145

SOLD



Fantastic shell pink sculpted oval 40s tilt hat. Angled forward on head and secured with elastic band under hair; the hat has two comely beanie bobbles nestled into the top. Black velvet is dotted with pink chenille. Labeled "A Cashel Model" that is less of a cameo has as shown, more true pink. No flaws, a stunning example of the 40s tilt. One size.

\$145

SOLD



Amazing 40s hat of curly lamb fur in soft greys married with a rayon, wire supported folding band at front to angle away from face. Hat has a darling and unusual accent of springlike velvet millinery flowers to side. Reminds me of the old song "Violets for You Fur"! Very small hat, the average wearer will need to pin it to secure. No flaws.

\$115



Shell pink 30s sisal and rayon beret with stem on top. Small size, 21.5. No flaws.

\$60



40s hat of natural straw with bright velvet flowers. Shallow crown, curved brim edged in black velvet...black velvet band. Clips secure to head. No flaws, one size.

\$90



40s tilt hat covered in soft white shimmering velvet. Clips at sides to secure, rigid structure with shirred fabric around edges. No label, no flaws.

\$40



Navy blue felted late 30s hat with wide brim, grosgrain ribbon in blue with dip at front revealing tangerine, mint green and yellow ribbon stripes. 21 1/2" around inside, no flaws.

\$75



Whimsical black woven sisal asymmetrical 1930s hat. Sweeps down over right side of face and sets off a black and white grosgrain bow, bottom as it curves toward left side edged in white. No flaws, no label. Perfect with a vintage dress! Size 22.

\$145



40s fawn colored felted fur hat with wide brim and rhinestone embellishment. No flaws, sz 21 1/2.

\$125



1940s tilt hat in brown felted wool with grosgrain ribbon detail, straps to secure beneath hair in back...oval shaped hat trimmed around sides with beaver fur. No flaws. One size.

\$120

SOLD



1930s cinnamon brown felted wool hat with little painted wooden bead accents and stem on top. No flaws. Size 22.

\$110



Gorgeous 1920s cloche hat with braided applique fishscale effect and sculpted ribbon detail on side. Narrow brim, smaller at sides and back. A few very tiny moth "dents", no holes or stains...superb condition. Size 21 1/2, small.

\$125



Elegant 20s hat of sculpted buckram covered in layers of velvet ribbon in shades of taupe, some smocked for a textured effect. Toward front of hat ribbon is coiled in floral rosette designs in soft teal and rosy pink. Hat is edged with peaked silk trim, small bow in back. Lined in iridescent mauve silk that is shattering, not an issue when worn, could be taken out or replaced. By "Landsco". 23" around inside brim.

\$150

SOLD





Scarlet red ostrich feather 40s tilt hat set on small satin lined cap with silk velvet ribbon to secure under hair and creating a soft fall to one side. Some wear to feathers, superb color and condition!! Fits any size.

\$95



40s tilt hat of braided navy blue cello, topped with fringed daisy flowers & foliage. Blue netting can be worn down or pulled up into florals. Blue velvet band around back to secure under hair & wear tipped forward.

\$115



Iconic 40s platter hat in felted wool wrapped in sculpted wide bands of velvet ribbon. This back on head, one size, no flaws.

\$115



Chic and simple deep blue felted fur 1930s hat. Fitted to top of head, swooping down into a faux "bill" on right side. No label, no flaws. Size 21 1/2.

\$110



40s ostrich plume decked tilt hat in cinnamon and peach. Cinnamon felted small base sits forward and to the side on head, black elastic cord secures around back beneath hair. No flaws. One size.

\$175



Late 40s blue felted cocktail hat with rolled brim and 2 bent tabs over each side of face adorned with beads. Veil over face, no flaws. Sz 22.

\$55



40s structured blue double peaked headband hat with bows and veiling. The veiling needs replaced (leaving for visual cue in case wearer decides to add new). Would look superb without as well. No other flaws.

\$50



1940s round tan felted wool hat with rolled under short brim. Each side adorned with whole bird wing accents on fabric base. An authorized La Manoir reproduction. Size 22. No flaws, theatre label this was used in in ghed inside at top of crown.

\$165



1930s goddess worthy emerald green feather headpiece. Curled feathers adorn a black velvet wired cord, trailing in back to the nape of hair. No flaws.

\$195

Add to cart



1940s sisal hat in lavender with sculpted raffia flowers on right side. Wraps over head loosely, will need pinned into place. No flaws. One size.

\$115

Add to Cart



The most amazing 40s hat ever! Black felt sculpted and veiled into dramatic, towering tilt hat secured by ring fitting under hair in back and worn tilted forward. Right side features cut away top finished bonnet! An incredible hat worthy of the top screen stars of the day. 11" high, 17" including feather veils. From the SPENCER COMMUNITY THEATRE.

\$225

SOLD



Bold purple felted 40s tilt hat with small brim, large bright pink velvet peonies. Back cord to secure beneath hair in back. Some exposed purple thread, may have had a third flower. no holes or stains. fantastic condition. One size.

\$140



1940s black woven sisal Juliette cap with winged effect around sides, bow in front. No flaws, one size.

\$110





Summery sweet sheer cello floral 20s cloche accented with black silk velvet bands. Cloche dips lower on right side where a small bouquet of velvet flowers in soft yellow, bright pink and violet are perched. Edged around inside with a mesh band, no labels, no flares. 22" around inside.

\$180  
**SOLD**



1930s pewter grey woven sisal cloche with silk satin band and celluloid deco adornment on front. Folds up on left side. No holes or stains. 21 1/2.

\$185



Rare 40s hat in platter style made by famed fedora maker "Dobson". Grey felted wool with velvet band around shallow crown, coordinating hat pin. No holes or stains, could stand to be reblocked, a few dents. Wide brim, stellar style! Comes with original Dobson hat box, a plus for a hat of this size!

\$155

**SOLD**

Black sisal and satin 1930s hat with deco styling and rhinestone celluloid accent at side. No flaws, sz 21 1/2.

\$155



1930s mini straw boater hat with yellow and orange roses, green ribbon. Elastic strap to secure to back of head. No flaws.

\$110



1940s woven sisal curved deep blue hat with pink rose on side. U shaped open back, velvet flat bow on back. Some faint water marks on rose petals. By Paulette of Paris and G. Howard Hodge. One size.

\$115

